

## HT Protein Express Reagent Kit

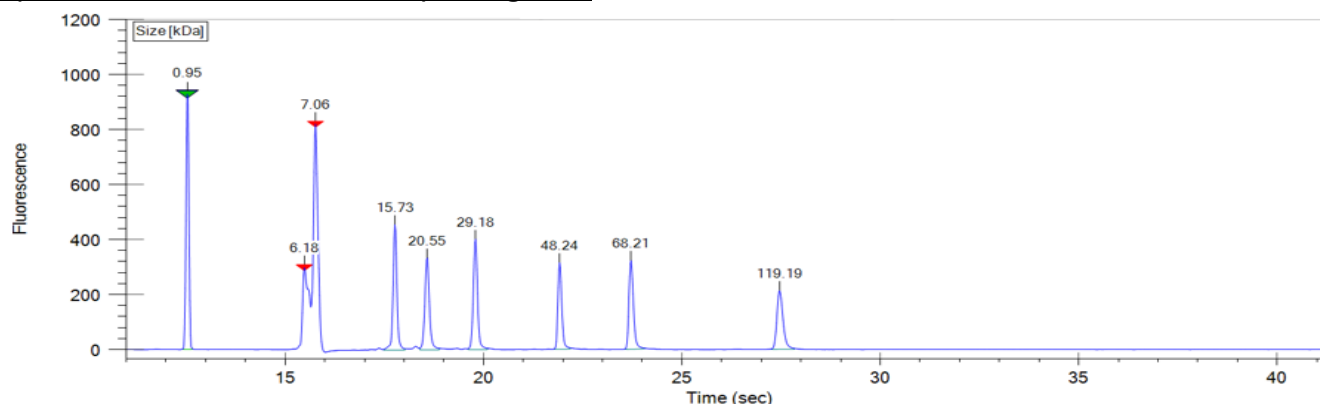
Product Number: CLS960008

Lot Number: DE20RK01

Expiration Date: 20 FEB 2026

PARAMETER	SAMPLE	SPECIFICATION	RESULT
Resolution	All Ladders	5% resolution $\geq 0.83$	Pass
Peak height	Lower Marker	LM > Ladder peaks (Ratio $\geq 1$ )	Pass
Sensitivity	30ng/ul CA samples	All detected (Min height $\geq 5$ rfu)	Pass
Sizing	All ladder	All peaks within 15%	Pass
Concentration	125ng/ul CA sample	Within 30%	Pass
Largest Impurities	New Ladder	$\leq 20\%$ of smallest peak	Pass
Total Impurities	New Ladder	$\leq 10\%$ of total % purity	Pass
System Peak	All Ladders	Sys Peak:LM migration time ratio < 1.3	Pass
Negative Peaks	New Ladder	<0.5% on all ladder peaks.	Pass
120kDa Peak	New Ladder	>150 RFU	Pass

## Representative Ladder Electropherogram\*



\* Peaks shown are typical Protein Express ladder results. Peak height and width may vary.

Reagent	Vial	Quantity
Protein Dye Solution	Blue ●	1 vial of 0.13 mL
Sample Buffer	White ○	4 vials, 1.5 mL each
Protein Gel Matrix	Red ●	3 vials, 1.7 mL each
Protein Ladder	Yellow ●	2 vial, 0.08 mL
Lower Marker	Green ●	2 vial, 0.5 mL
Wash Buffer	Purple ●	5 vials, 1.8 mL each
Consumable Items	PN 960008	1

The information provided in this document is valid for the specified lot number and date of analysis. This information is for reference purposes only and does not constitute a warranty or guarantee of the product's suitability for any specific use. Revvity, Inc., its subsidiaries, and/or affiliates (collectively, "Revvity") do not assume any liability for any errors or damages arising from the use of this document or the product described herein. REVVITY EXPRESSLY DISCLAIMS ALL WARRANTIES, INCLUDING WARRANTIES OF MERCHANTABILITY OR FITNESS FOR A PARTICULAR PURPOSE, REGARDLESS OF WHETHER ORAL OR WRITTEN, EXPRESS OR IMPLIED, ALLEGEDLY ARISING FROM ANY USAGE OF ANY TRADE OR ANY COURSE OF DEALING, IN CONNECTION WITH THE USE OF INFORMATION CONTAINED HEREIN OR THE PRODUCT ITSELF

CLS960008-R Rev02

revvity